

Our Approach

We address critical global challenges and catalyze sustainable development through **high-quality education**.



1. Mindset Change

Shift to a regenerative money mindset that focuses on generating income to create deeper and broader social and environmental impact.

2. Skillset Development

Build in-demand skills in social entrepreneurship, including impact management, measurement, and business modelling.

3. Toolset Access

Lifetime access to essential tools, including the problem validation rubric, program contribution matrix, theory of change canvas, measurement framework, competitive stack map, and brand guidelines.



IMPACT TOOLBOX



Coaches
and facilitators



Case studies
and templates



Intuitive
learning platform



Customizable
curriculum



High-quality
content



Practical exercises
and worksheets

Let's get in touch!



www.impacttoolbox.org
hello@impacttoolbox.org
[in](#) [@](#) [f](#) [@impacttoolbox](#)



IMPACT TOOLBOX

**Social
entrepreneurship
made easy.**

Educational resources, tools,
and support to help people
start businesses for **social** and
environmental good.

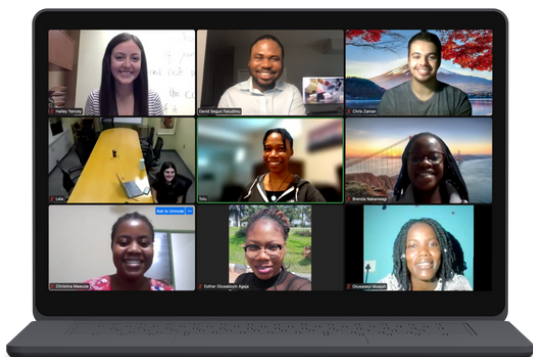
www.impacttoolbox.org



What is Impact Toolbox?

We make it easy for business incubators, accelerators, investors, and ecosystem builders to offer social entrepreneurship programs to their audiences.

- ✓ We offer **social entrepreneurship education** and help start and grow social enterprises.
- ✓ We **coach** entrepreneurs to integrate social impact deeply into their business strategies.
- ✓ We **guide** social changemakers to transform their visionary ideas and passion into thriving social enterprises.



As a **national charity**, our global team of educators and social entrepreneurs brings over **200 years** of combined experience. Together, let's empower the next generation of changemakers.



WAYS WE CAN WORK TOGETHER:

Partnership

Partner with us to co-create an experiential and practical learning program. We'll manage the entire incubation program in partnership with you. In just 16 weeks, participants will develop a social enterprise business plan and pitch deck. The program is highly flexible and can be tailored to meet participants' specific needs.



1 year access to self-paced social entrepreneurship course



Coaching, tools, templates, and worksheets



Guidance from experienced social entrepreneurs

Customized Content

Customize our award-winning curriculum and content for your own purpose. We'll tailor training materials, landing pages, and presentations to your brand, working behind the scenes to deliver a world-class social entrepreneurship program. From logo placement to full white-labeling, we adapt to your needs and budget.



Tools, templates, and worksheets



Presentations, text lessons, and video lessons



User-friendly learning management system



4-hour training session for facilitators

Group Enrollment

Enroll your group in our courses and give participants one year of self-paced access. Participants will learn how to launch a social enterprise, build a business model, discover customers, and find market fit.

Everyone you enroll gets a special discount of:



Terms and conditions apply.



Flexible and practical, with a global community of peers

